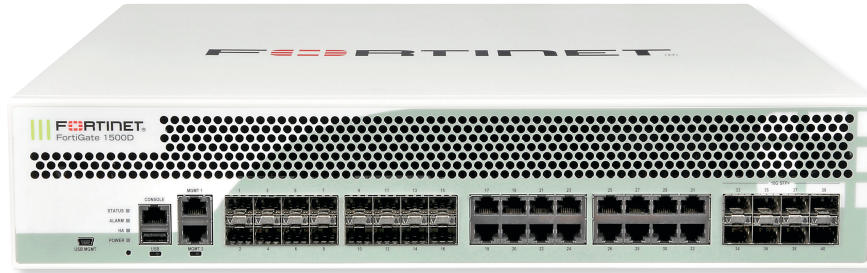


FortiGate® 1500D Series

FortiGate 1500D and 1500DT

Next Generation Firewall
Segmentation
Secure Web Gateway
IPS
Mobile Security



The FortiGate 1500D series delivers high performance next generation firewall (NGFW) capabilities for large enterprises and service providers. With multiple high-speed interfaces, high-port density, and high-throughput, ideal deployments are at the enterprise edge, hybrid data center core, and across internal segments. Leverage industry-leading IPS, SSL inspection, and advanced threat protection to optimize your network’s performance. Fortinet’s Security-Driven Networking approach provides tight integration of the network to the new generation of security.

Security

- Identifies thousands of applications inside network traffic for deep inspection and granular policy enforcement
- Protects against malware, exploits, and malicious websites in both encrypted and non-encrypted traffic
- Prevents and detects against known attacks using continuous threat intelligence from AI-powered FortiGuard Labs security services
- Proactively blocks unknown sophisticated attacks in real-time with the Fortinet Security Fabric integrated AI-powered FortiSandbox

Performance

- Engineered for Innovation using Fortinet’s purpose-built security processors (SPU) to deliver the industry’s best threat protection performance and ultra-low latency
- Provides industry-leading performance and protection for SSL encrypted traffic including the first firewall vendor to provide TLS 1.3 deep inspection

Certification

- Independently tested and validated best security effectiveness and performance
- Received unparalleled third-party certifications from NSS Labs, ICSA, Virus Bulletin, and AV Comparatives

Networking

- Application aware routing with in-built SD-WAN capabilities to achieve consistent application performance and the best user experience
- Built-in advanced routing capabilities to deliver high performance with encrypted IPSEC tunnels at scale

Management

- Includes a management console that is effective and simple to use, which provides a comprehensive network of automation & visibility
- Provides Zero Touch Provisioning leveraging Single Pane of Glass Management powered by the Fabric Management Center
- Predefined compliance checklists analyze the deployment and highlight best practices to improve the overall security posture

Security Fabric

- Enables Fortinet and Fabric-ready partners’ products to provide broader visibility, integrated end-to-end detection, threat intelligence sharing, and automated remediation
- Automatically builds Network Topology visualizations which discover IoT devices and provide complete visibility into Fortinet and Fabric-ready partner products

Firewall	IPS	NGFW	Threat Protection	Interfaces
80 Gbps	13 Gbps	7 Gbps	5 Gbps	Multiple GE RJ45, GE SFP, and 10 GE SFP+ / GE SFP slots Variant with 10 GE RJ45

Refer to the specifications table for details

Deployment



Next Generation Firewall (NGFW)

- Reduce the complexity and maximize your ROI by integrating threat protection security capabilities into a single high-performance network security appliance, powered by Fortinet's Security Processing Unit (SPU)
- Full visibility into users, devices, applications across the entire attack surface and consistent security policy enforcement irrespective of asset location
- Protect against network exploitable vulnerabilities with Industry-validated IPS security effectiveness, low latency and optimized network performance
- Automatically block threats on decrypted traffic using the Industry's highest SSL inspection performance, including the latest TLS 1.3 standard with mandated ciphers
- Proactively block newly discovered sophisticated attacks in real-time with AI-powered FortiGuard Labs and advanced threat protection services included in the Fortinet Security Fabric



Segmentation

- Segmentation that adapts to any network topology, delivering end-to-end security from the branch level to data centers and extending to multiple clouds
- Reduce security risks by improving network visibility from the components of the Fortinet Security Fabric, which adapt access permissions to current levels of trust and enforce access control effectively and efficiently
- Delivers defense in depth security powered by high-performance L7 inspection and remediation by Fortinet's SPU, while delivering third party validated TCO of per protected Mbps
- Protects critical business applications and helps implement any compliance requirements without network redesigns



Secure Web Gateway (SWG)

- Secure web access from both internal and external risks, even for encrypted traffic at high performance
- Enhanced user experience with dynamic web and video caching
- Block and control web access based on user or user groups across URL's and domains
- Prevent data loss and discover user activity to known and unknown cloud applications
- Block DNS requests against malicious domains
- Multi-layered advanced protection against zero-day malware threats delivered over the web



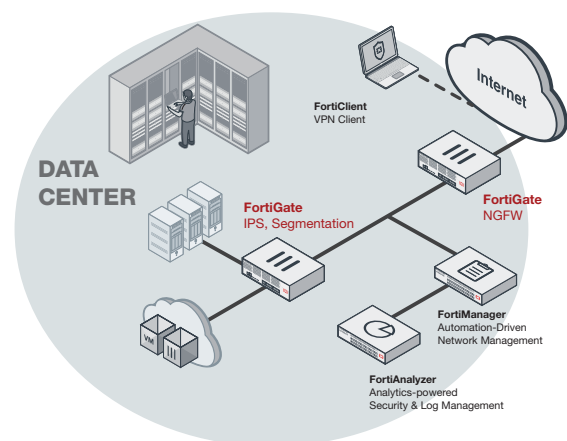
IPS

- Purpose-built security processors delivering industry validated IPS performance with high throughput and low latency
- Deploy virtual patches at the network level to protect against network exploitable vulnerabilities and optimize network protection time
- Deep packet inspection at wire speeds offers unparalleled threat visibility into network traffic including traffic encrypted with the latest TLS 1.3
- Proactively block newly discovered sophisticated attacks in real-time with advanced threat protection provided by the intelligence services of the Fortinet Security Fabric



Mobile Security for 4G, 5G, and IOT

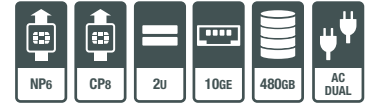
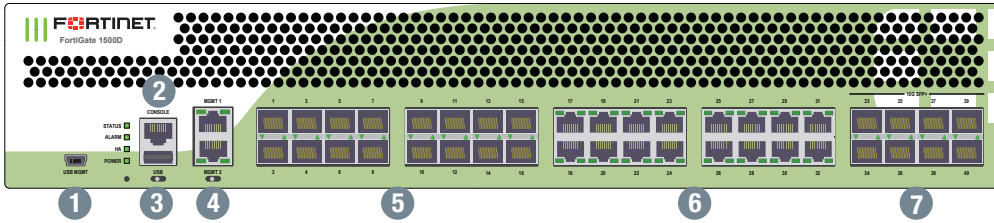
- SPU accelerated, high performance CGNAT and IPv6 migration option including: NAT44, NAT444, NAT64/DNS64, NAT46 for 4G Gi/sGi and 5G N6 connectivity and security
- RAN Access Security with highly scalable and best performing IPsec aggregation and control security gateway (SecGW)
- User plane security enabled by full Threat Protection and visibility into GTP-U inspection
- 4G and 5G security for user and data plane traffic including SCTP, GTP-U and SIP that provides protection against attacks
- High-speed interfaces to enable deployment flexibility



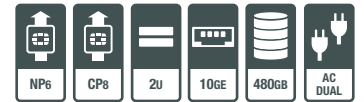
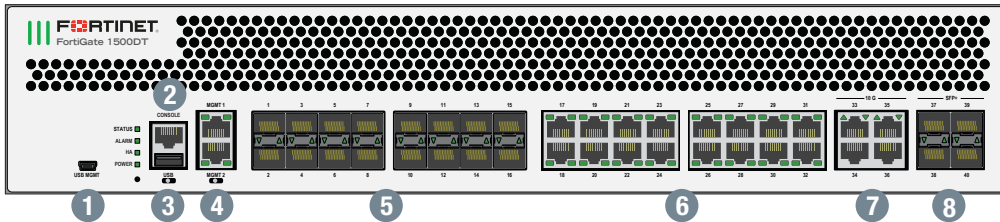
FortiGate 1500D deployment in data center
(NGFW, IPS, and Intent-based Segmentation)

Hardware

FortiGate 1500D



FortiGate 1500DT



Interfaces

- | | |
|---------------------------------------------------------------------------------------------------------------------------------------------------------------------------------------------|---------------------------------------------------------------------------------------------------------------------------------------------------------------------------------------------|
| <ol style="list-style-type: none"> 1. USB Management Port 2. Console Port 3. USB Port 4. 2x GE RJ45 Management Ports 5. 16x GE SFP Slots | <ol style="list-style-type: none"> 6. 16x GE RJ45 Ports 7. 8x 10 GE SFP+ / GE SFP (1500D)
4x 10 GE RJ45 Ports (1500DT) 8. 4x 10 GE SFP+ Slots (1500DT) |
|---------------------------------------------------------------------------------------------------------------------------------------------------------------------------------------------|---------------------------------------------------------------------------------------------------------------------------------------------------------------------------------------------|

Powered by SPU



- Custom SPU processors deliver the power you need to detect malicious content at multi-Gigabit speeds
- Other security technologies cannot protect against today's wide range of content and connection-based threats because they rely on general-purpose CPUs, causing a dangerous performance gap
- SPU processors provide the performance needed to block emerging threats, meet rigorous third-party certifications, and ensure that your network security solution does not become a network bottleneck

Network Processor

Fortinet's new, breakthrough SPU NP6 network processor works inline with FortiOS functions delivering:

- Superior firewall performance for IPv4/IPv6, SCTP, and multicast traffic with ultra-low latency down to 2 microseconds
- VPN, CAPWAP, and IP tunnel acceleration
- Anomaly-based intrusion prevention, checksum offload, and packet defragmentation
- Traffic shaping and priority queuing

Content Processor

The SPU CP8 content processor works outside of the direct flow of traffic, providing high-speed cryptography and content inspection services including:

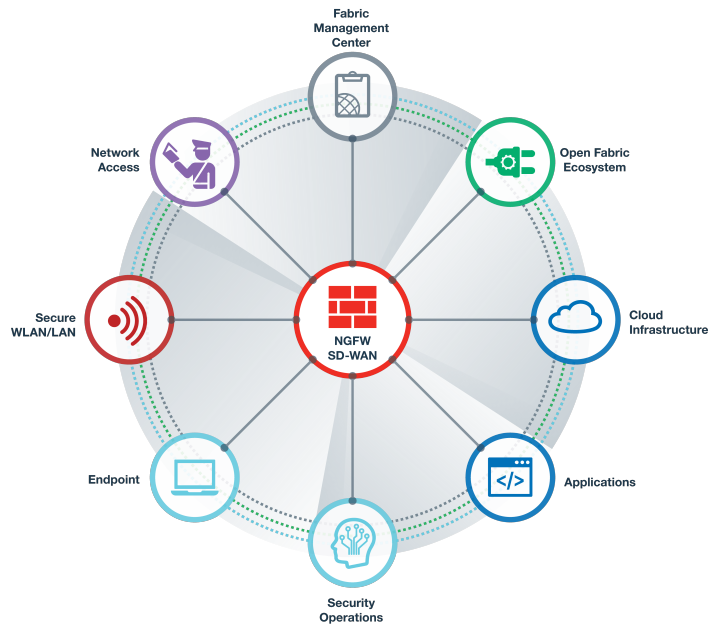
- Signature-based content inspection acceleration
- Encryption and decryption offloading

Fortinet Security Fabric

Security Fabric

The Security Fabric is the cybersecurity platform that enables digital innovations. It delivers broad visibility of the entire attack surface to better manage risk. Its unified and integrated solution reduces the complexity of supporting multiple-point products, while automated workflows increase operational speeds and reduce response times across the Fortinet deployment ecosystem. The Fortinet Security Fabric covers the following key areas under a single management center:

- **Security-Driven Networking** that secures, accelerates, and unifies the network and user experience
- **Zero Trust Network Access** that identifies and secures users and devices in real-time, on and off of the network
- **Dynamic Cloud Security** that protects and controls cloud infrastructures and applications
- **AI-Driven Security Operations** that automatically prevents, detects, isolates, and responds to cyber threats



FortiOS

FortiGates are the foundation of the Fortinet Security Fabric—the core is FortiOS. All security and networking capabilities across the entire FortiGate platform are controlled with one intuitive operating system. FortiOS reduces complexity, costs, and response times by truly consolidating next-generation security products and services into one platform.

- A truly consolidated platform with a single OS and pane-of-glass for across the entire digital attack surface.
- Industry-leading protection: NSS Labs Recommended, VB100, AV Comparatives, and ICSCA validated security and performance.
- Leverage the latest technologies such as deception-based security.

Services



FortiGuard Labs offer real-time intelligence on the threat landscape, delivering comprehensive security updates across the full range of Fortinet’s solutions. Comprised of security threat researchers, engineers, and forensic specialists, the team collaborates with the world’s leading threat monitoring organizations and other network and security vendors, as well as law enforcement agencies.

- Control thousands of applications, block the latest exploits, and filter web traffic based on millions of real-time URL ratings in addition to true TLS 1.3 support.
- Automatically prevent, detect, and mitigate advanced attacks within minutes with an integrated AI-driven security and advanced threat protection.
- Improve and unify the user experience with innovative SD-WAN capabilities with the ability to detect, contain, and isolate threats with automated segmentation.
- Utilize SPU hardware acceleration to boost network security performance.



Our FortiCare customer support team provides global technical support for all Fortinet products. With support staff in the Americas, Europe, Middle East, and Asia, FortiCare offers services to meet the needs of enterprises of all sizes.



For more information, please refer to forti.net/fortiguard and forti.net/forticare

Specifications

	FG-1500D	FG-1500DT
Hardware Specifications		
Hardware Accelerated 10 GE SFP+ / GE SFP Slots	8	4
Hardware Accelerated GE SFP Slots		16
Hardware Accelerated 10 GE RJ45 Ports	–	4
Hardware Accelerated GE RJ45 Ports		16
GE RJ45 Management / HA Ports		2
USB Ports (Client / Server)		1 / 1
Console Port		1
Onboard Storage	2x 240 GB SSD	
Included Transceivers	2x SFP+ (SR 10GE)	
System Performance — Enterprise Traffic Mix		
IPS Throughput ²		13 Gbps
NGFW Throughput ^{2,4}		7 Gbps
Threat Protection Throughput ^{2,5}		5 Gbps
System Performance and Capacity		
IPv4 Firewall Throughput (1518 / 512 / 64 byte, UDP)	80 / 80 / 55 Gbps	
IPv6 Firewall Throughput (1518 / 512 / 86 byte, UDP)	80 / 80 / 55 Gbps	
Firewall Latency (64 byte, UDP)		3 µs
Firewall Throughput (Packet per Second)		82.5 Mpps
Concurrent Sessions (TCP)		12 Million
New Sessions/Second (TCP)		300,000
Firewall Policies		100,000
IPsec VPN Throughput (512 byte) ¹		50 Gbps
Gateway-to-Gateway IPsec VPN Tunnels		20,000
Client-to-Gateway IPsec VPN Tunnels		100,000
SSL-VPN Throughput		4 Gbps
Concurrent SSL-VPN Users (Recommended Maximum, Tunnel Mode)		10,000
SSL Inspection Throughput (IPS, avg. HTTPS) ³		5.7 Gbps
SSL Inspection CPS (IPS, avg. HTTPS) ³		3,100
SSL Inspection Concurrent Session (IPS, avg. HTTPS) ³		800,000
Application Control Throughput (HTTP 64K) ²		16 Gbps
CAPWAP Throughput (1444 byte, UDP)		20 Gbps
Virtual Domains (Default / Maximum)		10 / 250
Maximum Number of FortiSwitches Supported		128
Maximum Number of FortiAPs (Total / Tunnel)		4,096 / 2,048
Maximum Number of FortiTokens		20,000
Maximum Number of Registered Endpoints		20,000
High Availability Configurations	Active-Active, Active-Passive, Clustering	

	FG-1500D	FG-1500DT
Dimensions and Power		
Height x Width x Length (inches)	3.5 x 17.24 x 21.81	
Height x Width x Length (mm)	89 x 438 x 554	
Weight	32.50 lbs (14.70 kg)	34.39 lbs (15.6 kg)
Form Factor (supports EIA/non-EIA standards)	Rack Mount, 2 RU	
AC Power Supply	100–240V AC, 50–60 Hz	
Current (Maximum)	110V / 5.5A, 220V / 3A	
Power Consumption (Average / Maximum)	336 / 403.2 W	230 / 350 W
Heat Dissipation	1,375 BTU/h	1,193 BTU/h
Redundant Power Supplies	Yes, Hot swappable	
Operating Environment and Certifications		
Operating Temperature	32–104°F (0–40°C)	
Storage Temperature	-31–158°F (-35–70°C)	
Humidity	10–90% non-condensing	
Noise Level	59 dBA	
Operating Altitude	Up to 7,400 ft (2,250 m)	
Compliance	FCC Part 15 Class A, RCM, VCCI, CE, UL/cUL, CB	
Certifications	ICSA Labs: Firewall, IPsec, IPS, Antivirus, SSL-VPN; USGv6/IPv6	

Note: All performance values are "up to" and vary depending on system configuration.

1. IPsec VPN performance test uses AES256-SHA256.
2. IPS (Enterprise Mix), Application Control, NGFW, and Threat Protection are measured with Logging enabled.
3. SSL Inspection performance values use an average of HTTPS sessions of different cipher suites.
4. NGFW performance is measured with Firewall, IPS, and Application Control enabled.
5. Threat Protection performance is measured with Firewall, IPS, Application Control, and Malware Protection enabled.

Order Information

Product	SKU	Description
FortiGate 1500D	FG-1500D	8x 10 GE SFP+ slots, 16x GE SFP slots, 18x GE RJ45 ports (including 16x ports, 2x management/HA ports), SPU NP6 and CP8 hardware accelerated, 480 GB SSD onboard storage, dual AC power supplies.
FortiGate 1500DT	FG-1500DT	4x 10 GE SFP+ slots, 4x 10 GE RJ45 ports, 16x GE SFP slots, 18x GE RJ45 ports (including 16x ports, 2x management/HA ports), SPU NP6 and CP8 hardware accelerated, 480 GB SSD onboard storage, dual AC power supplies.
Optional Accessories		
1 GE SFP LX Transceiver Module	FN-TRAN-LX	1 GE SFP LX transceiver module for all systems with SFP and SFP/SFP+ slots.
1 GE SFP RJ45 Transceiver Module	FN-TRAN-GC	1 GE SFP RJ45 transceiver module for all systems with SFP and SFP/SFP+ slots.
1 GE SFP SX Transceiver Module	FN-TRAN-SX	1 GE SFP SX transceiver module for all systems with SFP and SFP/SFP+ slots.
10 GE SFP+ RJ45 Transceiver Module	FN-TRAN-SFP+GC	10 GE SFP+ RJ45 transceiver module for systems with SFP+ slots.
10 GE SFP+ Transceiver Module, Short Range	FN-TRAN-SFP+SR	10 GE SFP+ transceiver module, short range for all systems with SFP+ and SFP/SFP+ slots.
10 GE SFP+ Transceiver Module, Long Range	FN-TRAN-SFP+LR	10 GE SFP+ transceiver module, long range for all systems with SFP+ and SFP/SFP+ slots.
10 GE SFP+ Transceiver Module, Extended Range	FN-TRAN-SFP+ER	10 GE SFP+ transceiver module, extended range for all systems with SFP+ and SFP/SFP+ slots.
10 GE SFP+ active direct attach cable, 10m / 32.8 ft	SP-CABLE-ADASFP+	10 GE SFP+ active direct attach cable, 10m / 32.8 ft for all systems with SFP+ and SFP/SFP+ slots.
Rack mount sliding rails	SP-FG3040B-RAIL	Rack mount sliding rails for FG-1000C/-DC, FG-1500D, FG-3040B/-DC, FG-3140B/-DC, FG-3240C/-DC, 3700D and 3950B/-DC.
AC power supply	SP-FG1200D-PS	AC power supply for FG-1200D, FG-1500D and FG-1500DT.

Bundles



FortiGuard Bundle

FortiGuard Labs delivers a number of security intelligence services to augment the FortiGate firewall platform. You can easily optimize the protection capabilities of your FortiGate with one of these FortiGuard Bundles.

Bundles	360 Protection	Enterprise Protection	Unified Threat Protection	Threat Protection
FortiCare	ASE ¹	24x7	24x7	24x7
FortiGuard App Control Service	•	•	•	•
FortiGuard IPS Service	•	•	•	•
FortiGuard Advanced Malware Protection (AMP) — Antivirus, Mobile Malware, Botnet, CDR, Virus Outbreak Protection and FortiSandbox Cloud Service	•	•	•	•
FortiGuard Web Filtering Service	•	•	•	
FortiGuard Antispam Service	•	•	•	
FortiGuard Security Rating Service	•	•		
FortiGuard Industrial Service	•	•		
FortiGuard IoT Detection Service ²	•	•		
FortiConverter Service	•	•		
IPAM Cloud ²	•			
SD-WAN Orchestrator Entitlement ²	•			
SD-WAN Cloud Assisted Monitoring	•			
SD-WAN Overlay Controller VPN Service	•			
FortiAnalyzer Cloud	•			
FortiManager Cloud	•			

1. 24x7 plus Advanced Services Ticket Handling 2. Available when running FortiOS 6.4

